



# 6047.06 & 6047.06/LP

## Pump or Remote Mounted Control Unit

The 6047-06 & 6047.06/LP are pump or remote mounted control units. They have right angle entry from the main body to the adjustable pressure regulator for smoother operation and longer life. They include a manual dump valve, two (2) 1/2" ball valve discharge ports, and pressure gauge.

Liquid handling parts are black anodized aluminum, stainless steel, and glass-filled nylon.

The 6047.06 is standard on KAPPA-75 & KAPPA-100 pumps,

The 6047.06/LP is fitted with a lighter spring and gauge for lower pressure applications and is recommended for RO-70 pumps.



### SPECIFICATIONS

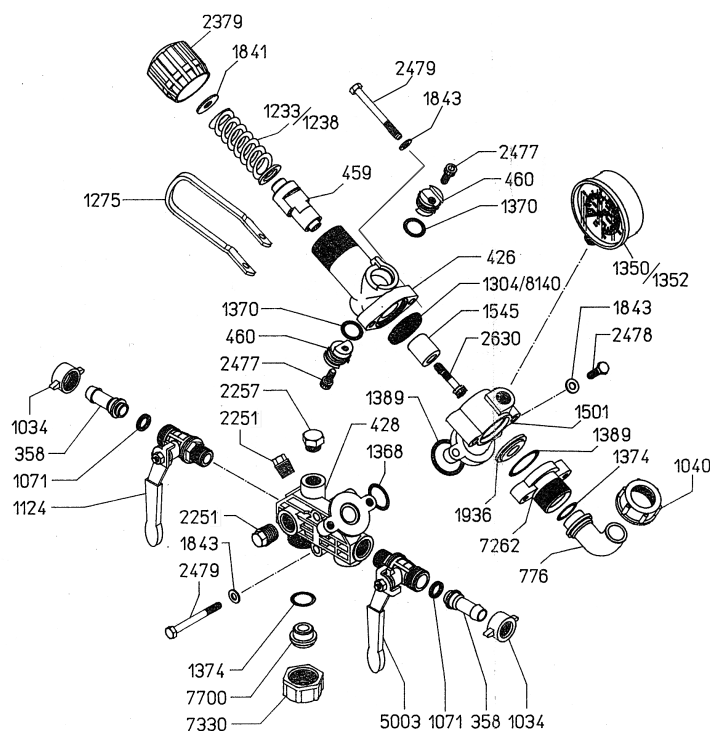
Maximum Flow .....	26 GPM
Maximum Pressure	
6047.06 .....	560 PSI
6047.06/LP .....	350 PSI
Discharge Ports	
Standard .....	(2) 1/2" Ball Valve
Optional .....	3/4" FNPT (part # 207P-12)
Dimensions .....	L-8" x W-3" x H-9.5"
Weight .....	5 lbs.

NOTE - Protect pumps from freezing. If freezing conditions exist, flush pump and system with a 50/50 mixture of antifreeze and water.



# 6047.06 & 6047.06/LP

## Exploded View Diagram and Parts List



REF#	PART#	DESCRIPTION	QTY
	358	1/2" Hose Barb	2
	426	Valve Body	1
	428	Main Body	1
	459	Valve Cylinder	1
	460	Valve Cylinder Cam	2
	776	Bypass Elbow Hose Barb	1
	1034	Discharge Barb Nut	2
	1040	Bypass Barb Nut	1
	1071	Gasket	2
	1124	Ball Valve (Left)	1
	1233	Spring (6047.06)	1
	1238	Spring, 300 (6047.06/LP)	1
	1275	Dump Valve Lever	1
	*1304	Diaphragm	1
	1350	Gauge (6047.06)	1
	1352	Gauge (6047.06/LP)	1
	*1368	O-Ring	1
	*1370	O-Ring	2
	1374	O-Ring	1
	*1389	O-Ring	2
	1501	Adapter Flange	1
	*1545	Poppet (Steel)	1
	1841	Washer	1
	1843	Washer	6
	*1936	Seat	1
	2251	Plug	2
	2257	Plug	1
	2379	Adjustment Knob	1
	2477	Bolt	2
	2478	Bolt	2
	2479	Bolt	4
	*2630	S.S. Bolt	1
	5003	Ball Valve (Right)	1
	7262	Bypass Flange	1
	7330	Nut	1
	7700	Plug	1
	8140	Diaphragm, Viton (Optional)	1

\* Parts Included in Repair Kit #8701.02.

**Note:** 8701.02 is the only repair kit to be used in this control unit.

## OPERATING INSTRUCTIONS

The Control unit has a manual dump valve, pressure control knob, glycerin-filled pressure gauge and two ball valve discharge ports. Optional 3/4" NPT outlets are available - consult UDOR U.S.A. for details.

1. Before operating or re-operating the pump, push the manual dump valve lever (Ref. #1275) down, so the pump will start at zero pressure. **FAILURE TO DO SO WILL VOID PUMP WARRANTY.**
2. Turn pressure adjustment knob (Ref. #2379) counterclockwise to relieve spring tension.  
NOTE: Step 2 applies only to initial start-up, and is not necessary in daily operation of pump.
3. Start unit and let run until air is evacuated from system, when only liquid is expelled from the bypass line.
4. Return dump valve lever to the UP position. Open spray gun or spray boom and turn the pressure adjustment knob (Ref. #2379) clockwise until desired operating pressure is achieved.